

HOW CAN WE HELP YOU?

**A GUIDE TO OUR PRICES,
PRODUCTS & PRESENCE**



CONTENTS

ABOUT US 4

F.A.Q 5

PHOTOS & PRINTING 6

STANDARD PRINTS 7

PEARL PAPER 8

METALLIC PAPER 9

ART PAPER - GICLEÉ 10

POSTER PRINTS 14

CANVAS - PRINTING 15

PASSPORT PHOTOS 17

ARTIST PRINT PACKAGE 18

PHOTO RESTORATIONS & MANIPULATIONS 19

FILM 21

FILM DEVELOPING 22

VHS & REEL CONVERSION 23

SCANNING 24

NEGATIVE & SLIDE SCANNING 28

FRAMING 30

BASICS RANGE 32

NAME FRAMES 33

CUSTOM FRAMING 34

FRAMING: COMPONENTS 36

INSTALLATIONS 36

BACKING 38

GLASS 39

HANGING STUFF 40

COMPETITION MOUNTS 41

CANVAS STRETCHING 41

WHEN & WHERE? 42

CONTACT US 42

T&C'S 43

IMAGELAND!

FRAMING

LAB

A BIT ABOUT US



Imageland was started as the first 1 hour photo lab in 1981 as an “off-shoot” of Candid Camera. In 1998 we moved to a much larger location on Victoria Street to increase our range of products and services to the photography market.

By 2007 we had grown even further and we opened a second branch on Lake Road that is

primarily for the picture framing services and renovated the Victoria Street branch.

2014 saw a major change with the merge of both branches into the newly refit store at 55 Lake Road in Frankton where all services are again under one roof and we now have great parking with excellent access from every part of the city!

F.A.Q

CAN YOU FIX PHOTOS?

Yes we sure can, loads and loads of them in fact.

WHERE ARE YOU?

On Lake road, beside Cakebox. There is a nifty map on the back page of the book or put 55 Lake Road into your GPS gadget!

CAN I GET CUSTOM FRAME MADE THE SAME DAY?

Yes - of course you can! If you really need something and we have the bits & pieces in stock it makes perfect sense for us to help you out!

WHEN CAN I EXPECT MY ORDER?

Most orders take between 1 & 3 weeks depending on the product - but expect a question back. We will ask you, “When would you like it” - Your answer will establish the time and day the order will be ready.

YOU CAN DO IT NOW... HOW MUCH MORE?

We would never charge you for something we can easily do within our regular working day. Every now and then we may need to charge a bit more for overtime created by workflow displacement but we will certainly let you know beforehand.

DO I HAVE TO COME IN?

Not at all - email, post or courier can get your work to us. We can also visit you within reason (fees may apply).

We have plenty of people email photos to us to have printed or framed for family all over NZ while they are on OE's or working in funny old England.

WHAT IS THE BEST WAY TO EAT BACON?

Cooked.

PHOTOS & PRINTING

PRINTING PHOTOS AT IMAGELAND

- KIOSK PRINTS
- PHOTO ENLARGEMENTS
- CANVAS
- ART PRINTS
- METALLIC PRINTS
- + MORE

For the majority of our papers (excluding the standard matte/gloss), we print using an Epson P9000 and P5000 using the highest quality, archival pigmented inks. We can print up to 44" on the short edge of the print.

We prefer to work directly with you to ensure the best results.

We offer colour matching services, all of our printing will be "true to file" as our profiles are built to extend the highest range of colour possible from our media range. Test prints are available, costs will vary based on swatch size/type required.

If we are required to match uncalibrated prints or prints on media with different properties please let us know in advance. This service starts from 20/image

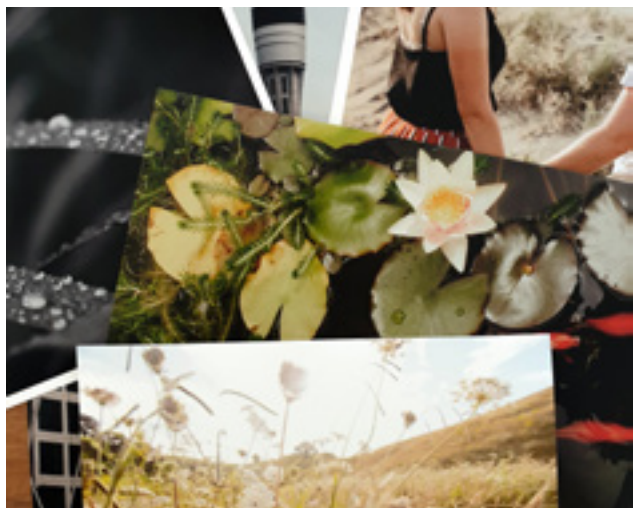
We often get asked what colourspace/profile to work with. In most instances sRGB jpeg will be suitable, make sure there is no compression on your file though. For the serious users, Prophoto 16bit tiff files can be used.

Our Kiosks accept images from your USB stick, memory card or smartphone. You then send them for printing which goes through our lab which can often be only a few minutes - check for times with our team.



STANDARD PRINTS

- Epson Surelab D860 (yes, the best one)
- Matte/Gloss
- Up to 12x8 in size
- Photos can be emailed through or you can use our in-store Kiosks to place your order

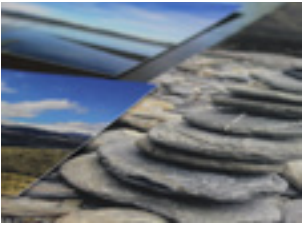


SIZE	PRICE PER PHOTO PER QUANTITY BEING ORDERED			
	1-9 Photos	10-24 Photos	25-99 Photos	100+ Photos
4 x 4	2	1.20	0.90	0.50
6 x 4	2	1.20	0.90	0.50
5 x 5	5	3	2.50	1.60
6 x 6	8	3	2.50	4.50
7 x 5	5	3	2.50	1.60
8 x 6	8	6.50	5.50	4.50
8 x 8	6	5.40	5	4
10 x 8	10	8	7	5.50
12 x 8	12	9	7.50	5.90

PEARL PAPER

Iford Galerie Smooth Pearl is the most common paper we use for accurate colour reproduction of photos.

We have been using the Iford Pearl since 2003 and we trust it. The finish is a semi-gloss appearance with tiny wee dimples, cute!



SIZE	PRICE
4x4	2
6x4	2
5x5	5
6x6	8
7x5	5
8x6	8
8x8	10
10x8	10
10x10	19
12x8	12
12x12	27
15x8	21
20x8	27

SIZE	PRICE
14x11	25
18x12	30
16x16	43
20x16	49
20x20	59
24x16	65
24x20	70
24x24	95
27x18	85
30x10	65
30x20	95
30x30	155
36x12	95

SIZE	PRICE
36x24	135
45x30	195
48x36	225
40x10	115
60x20	150
60x40	275
A5	8
A4	12
A3	30
A2	65
A1	135
A0	225

SIZE NOT LISTED?

If you have a unique size to print, flick us through an email with the size (make sure to let us know the unit of measurement!) and we will get back to you with a price.

Typically this will be the next nearest size listed, rounded up. This can be tricky if you have a panorama to print however!

METALLIC PAPER

Iford Metallic paper is spectacular and makes the most of every part of your image.

We get picky on this one. if there is even a tiny amount of aberration, jpeg compression or any other issue that might make it look stink we'll let you know beforehand because it can be quite obvious and distracting.



SIZE	PRICE
4x4	5
6x4	10
5x5	10
6x6	10
7x5	10
8x6	15
8x8	20
10x8	25
10x10	40
12x8	35
12x12	60
15x8	40
20x8	55
14x11	45
18x12	60
16x16	85
20x16	85
20x20	120
24x16	135
24x20	135
24x24	210

SIZE	PRICE
27x18	170
30x10	125
30x20	170
30x30	345
36x12	175
36x24	240
45x30	460
48x36	445
40x10	130
60x20	310
60x40	615
A5	15
A4	35
A3	50
A2	100
A1	200
A0	400

ART PAPER - GICLEÉ

With x3 different textures to choose from, these prints look great! If you have a great photo, it will look its best on one of these. These Ilford folks have been around for a blimmin long time - they certified us, 'nuff said.

SIZE	PRICE	SIZE	PRICE
4x4	5	24x20	100
6x4	5	24x24	140
5x5	5	27x18	115
6x6	10	30x10	80
7x5	10	30x20	125
8x6	10	30x30	225
8x8	15	36x12	110
10x8	20	36x24	175
10x10	25	45x30	310
12x8	25	48x36	335
12x12	40	40x10	90
15x8	30	60x20	235
20x8	40	60x40	465
14x11	35	A5	10
18x12	45	A4	25
16x16	60	A3	40
20x16	65	A2	75
20x20	85	A1	150
24x16	90	A0	300

WHAT'S THE DEAL?

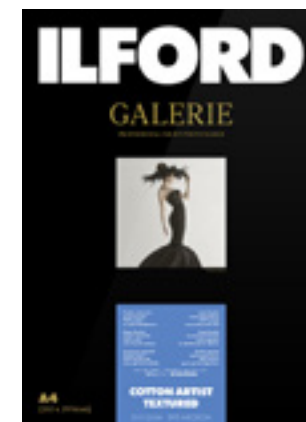
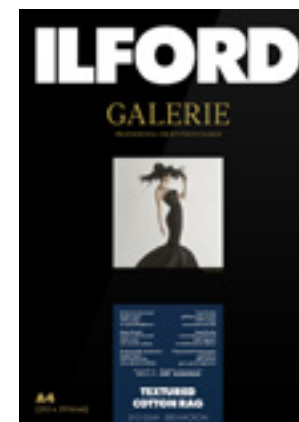
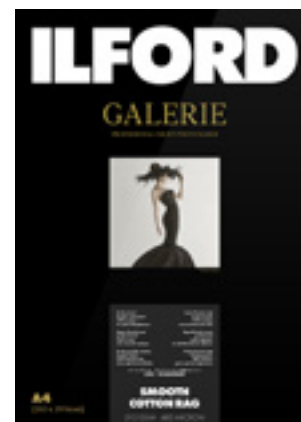
"Zee-Clay"

Gicleé printing typically refers to using long life ink and paper with an art paper texture which has basically no reflection. The surface of art papers has a very tactile appearance and is suitable for a wide range of images.

Imageland uses genuine Epson Ultra-Chrome HDR 9900 which has a longevity of up to 200 years for colour, and over 200 years for B&W prints.

ART PAPER - GICLEÉ CONT.

The new GALERIE 100% Cotton fourdriner-made rag papers lead the way within the range in meeting the needs of professional fine art printers. Photographers and print-makers alike can rely on these new papers to produce the highest quality images they have come to know and love from ILFORD.



SMOOTH COTTON RAG

- 100% cotton rag
- Very smooth surface
- No optical brighteners
- High color consistency and gamut
- Water resistance

TEXTURED COTTON RAG

- 100% cotton rag
- Smooth textured surface
- No optical brighteners
- High color consistency and gamut
- Water resistance

COTTON ARTIST TEXTURED

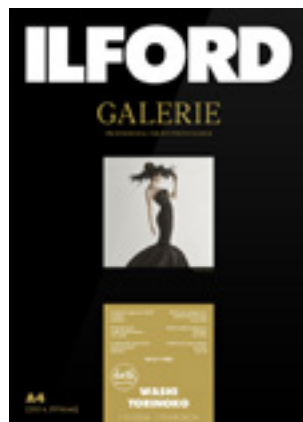
- Traditional watercolor textured surface
- Wide color gamut and color consistency
- Sharp crisp details
- Mould made, 100% cotton rag paper
- No optical brighteners
- Base manufactured in a traditional paper mill

WASHI TORINOKO

ILFORD GALERIE Washi Torinoko is a fine art paper with a traditional, Washi, Japanese base and a fine textured surface.

The base, exclusively produced for ILFORD, is manufactured using a traditional Japanese Tanmo machine which produces a paper so refined it looks like it has been handmade. The Washi base is made in the Echizen area of Japan, which is famous for the production of traditional Japanese paper with a history spanning over 1500 years in paper production.

SIZE	PRICE	SIZE	PRICE
4x4	5	24x20	90
6x4	5	24x24	130
5x5	5	27x18	105
6x6	10	30x10	75
7x5	10	30x20	110
8x6	10	30x30	210
8x8	15	36x12	105
10x8	15	36x24	160
10x10	25	45x30	285
12x8	25	48x36	295
12x12	35	40x10	80
15x8	25	60x20	205
20x8	35	60x40	410
14x11	30	A5	10
18x12	40	A4	25
16x16	55	A3	35
20x16	55	A2	70
20x20	80	A1	135
24x16	85	A0	265



- Look and feel of hand-made Japanese paper
- Produced using specialised Japanese paper-making machine called a Tanmo machine
- Fine textured matt surface
- Wide color gamut and consistency
- No optical brighteners
- Acid Free

HAHNEMÜHLE PHOTO RAG



Hahnemühle Photo Rag® is one of the world's most popular papers and the valued all-rounder for high-quality FineArt inkjet printing.

The white cotton artist's paper, with its characteristic, wonderfully soft feel, boasts a lightly defined felt structure, lending each artwork a three-dimensional appearance and impressive pictorial depth. Combined with the matt premium inkjet coating, this paper produces outstanding prints that feature brilliant colours, deep blacks, striking contrasts and perfect reproduction of detail.



- 300gsm, 100% cotton
- White
- Characteristic, beautiful defined felt structure
- Matt premium inkjet coating for outstanding print results
- Acid- and lignin-free
- ISO 9706 conform / museum quality for highest age resistance

SIZE	PRICE	SIZE	PRICE
4x4	10	24x20	195
6x4	10	24x24	295
5x5	10	27x18	235
6x6	15	30x10	170
7x5	15	30x20	245
8x6	20	30x30	480
8x8	25	36x12	240
10x8	35	36x24	355
10x10	55	45x30	650
12x8	50	48x36	660
12x12	80	40x10	185
15x8	55	60x20	460
20x8	75	60x40	915
14x11	65	A5	20
18x12	85	A4	50
16x16	120	A3	75
20x16	125	A2	150
20x20	175	A1	300
24x16	185	A0	595

POSTER PRINTS

Poster prints are a perfect short term display solution. We also offer these prints on a self adhesive material which is perfect for quick and easy mounting onto various boards. Great for trade show stands and exhibitions.

TRUE COLOUR POSTER

- 180 GSM
- Great for temporary solutions (such as advertising).

SELF ADHESIVE

- Sticker-back
- Great for temporary solutions (such as advertising).

TRUE COLOUR POSTER PAPER & CONDOR SELF ADHESIVE

SIZE	PRICE	SIZE	PRICE	SIZE	PRICE
4x4	5	14x11	15	36x24	60
6x4	5	18x12	15	45x30	105
5x5	5	16x16	20	48x36	115
6x6	5	20x16	25	40x10	30
7x5	5	20x20	30	60x20	80
8x6	5	24x16	30	60x40	155
8x8	5	24x20	35	A5	5
10x8	10	24x24	50	A4	10
10x10	10	27x18	40	A3	15
12x8	10	30x10	30	A2	25
12x12	15	30x20	45	A1	50
15x8	10	30x30	75	A0	100
20x8	15	36x12	40		

CANVAS - PRINTING

In March 2003 we made our first ever Canvas print digitally, since then we have made thousands, tens of thousands of canvas's actually. As a result, we tend to stick to a quality product, our venture into making cheap canvas prints like the ones people often get online is not something we're going to do again. Do it once, do it right is the plan, our prices are higher because we do a bloody good job and hate the idea of providing a product of inferior quality.

MUSEUM WRAP

- Canvas stretched so that the image is visible from the front only i.e. white canvas visible on the sides of the stretcher bar.
- Sides may be printed as any colour.

GALLERY WRAP

- Canvas stretched so that the image is visible on the sides of the stretcher bar.

MUSEUM or GALLERY WRAP

SIZE	PRICE	SIZE	PRICE	SIZE	PRICE
4x4	30	14x11	125	36x24	350
6x4	40	18x12	140	45x30	475
5x5	40	16x16	140	48x36	500
6x6	45	20x16	150	40x10	250
7x5	45	20x20	200	60x20	425
8x6	55	24x16	200	60x40	595
8x8	65	24x20	215	A5	55
10x8	75	24x24	215	A4	90
10x10	95	27x18	250	A3	130
12x8	90	30x10	200	A2	200
12x12	125	30x20	250	A1	340
15x8	105	30x30	300	A0	500
20x8	135	36x12	265		

CANVAS -PRINTING CONT.

UNSTRETCHED

This is a product printed & unstretched, which allows for either further embellishment by artists or instead of wrapping over a strainer frame for “frameless” display, they can be framed for a more traditional presentation. All canvas’ are sprayed with a liquid laminate.



UNSTRETCHED CANVAS					
SIZE	PRICE	SIZE	PRICE	SIZE	PRICE
4x4	10	14x11	45	36x24	250
6x4	10	18x12	60	45x30	435
5x5	10	16x16	85	48x36	475
6x6	15	20x16	90	40x10	125
7x5	15	20x20	120	60x20	330
8x6	15	24x16	125	60x40	655
8x8	20	24x20	140	A5	15
10x8	25	24x24	195	A4	35
10x10	40	27x18	160	A3	55
12x8	35	30x10	110	A2	105
12x12	55	30x20	175	A1	205
15x8	40	30x30	315	A0	405
20x8	55	36x12	160		

PASSPORT PHOTOS

There are some very stringent requirements and we cannot compromise on some things, sometimes the difference between looking good and getting an acceptable passport photo clash and we have no option other than to portray you like the criminal you feel like when going through Customs (hopefully it’s not just us that feels that way). There isn’t really any definite “criminal look” but we can help you look like the stereotypical example we all imagine. This is the preferred look for a passport image and will result in much faster passage through customs as everyone just wants that scary photo of you out of sight fast!

OPTION	PRICE
Passport Photo (x2 Copies)	20
Add x2 prints	+5
Add digital copy	+5
Baby Passport Photos	30



ANY COUNTRY, ANY AGE, ANY SPECIFICATION

WE TAKE PHOTOS FOR:

- Passport & Visa
Photos – any country, any specifications
- Immigration
- NZ Passport Online Renewal
- ID Photos for Applications
- 200% Guarantee* (money back & replacement photos)

In New Zealand there are numerous tales of disappointment about passport photos. Frequent comments we hear are: “OMG I DON’T LOOK LIKE THAT DO I???”, “WOW, where did my hair all go?”, “How fast can you do it?”... While we can’t really help all that much with the first two (we will try but a serious face just does not suit everyone and passport photos must have your “serious face”), the third one is a simple answer, a few minutes is all it normally takes.

ARTIST PRINT PACKAGE

Wish to create prints from your original artworks? Easy! We can help with that. These packages below are for the printing part only. If you need your artwork digitised for printing - see our print scanning page further down for more information.

Our Artist Packages papers are your choice of one of our three GALERIE Ilford Rag papers (Ilford Textured Cotton Rag, Ilford Smooth Cotton Rag, Ilford Cotton Artist Rag). Please see pages 10-11 for more in-depth info on these papers!

Each print comes in a Crystal Clear Bag with foam backing, which is great for displaying, as well as keeping the print protected.

Our matted print packages have a choice of one of five matboard colors:

- White
- Off-White
- Black
- Green
- Blue

Please note that the prints will be matted to the nearest A-series size (so for example, an A4 with a matboard will make the overall size A3).

ARTIST PRINT PACKAGES							
SIZE	QTY	BASIC	MATTED	SIZE	QTY	BASIC	MATTED
A5	1	22	N/A	A3	1	52	80
	5	90	N/A		5	210	350
	25	425	N/A		25	1000	1650
	50	800	N/A		50	1800	3000
	100	1500	N/A		100	3300	5700
A4	1	37	60	A2	1	93	120
	5	160	250		5	400	500
	25	750	1100		25	1800	2300
	50	1400	2100		50	3500	4500
	100	2500	4000		100	6500	8500

PHOTO RESTORATIONS & MANIPULATIONS

A dog, a cat, a Grandma, a shoe... We don't know what is important to you! Either way - we'll do our bestest to honour your memories! We don't physically restore your original photos, we wouldn't want to damage them at all! But we scan them, restore them digitally and provide you with a copy of this so you can share them with the whole family! Printing costs are extra but we have specialty papers that will make them look awesome.



Why choose us?

- We restore photos ourselves
- Each image is treated as if it was part of our own history
- We understand need for haste and can always provide a solution in the time you need
- We can work to a set budget if necessary
- Prices include a download link with the working and printable files
- Prints are additional (pages 4 & 5)
- Please note that additional charges may apply for heavily damaged pieces.

RESTORATION

Congratulations, you have been awarded the wonderful family task as the “photo person”, don’t worry we will help! It is common to expect great things that are perhaps a bit too ambitious, but equally we can achieve much more than is expected at the same time! Wonderful words there, kinda mean all-sorts and nothing at the same time. The guts of it is simple, we will try our best, we know that we are often being asked to work on photos of people who are no longer with us, we love the fact that we are entrusted with such precious items and we will do everything possible to help you out. Please see us instore for prices, as these are a case-by-case basis!

PHOTO RESTORATION		
TYPE	APPROX. PRICE	DESCRIPTION
Basic	40	Removal of spots and blemishes on uniform areas.
Standard	60	As above with spot removal in facial or non-uniform areas.
Advanced	100	As above with blotch removal in facial or non-uniform areas.
Difficult	175	As above with repairs to missing portions of images.
Elaborate	300	For multiple damaged areas or larger than 16” by 20” printing.
Colouring	100	Additional to restoration on a per item basis.

MANIPULATION

The dog is or is not in the photo, that is the question... Adding dogs, step-sisters or brothers-in-law is common, as is removing them. Where there is a will there is a way, we rarely say no as we respect juust how much thought and sometimes a lot of anxiety has gone in to asking us for such action. We want to help, we will help if we can, we will make suggestion for alternatives if there might be better solutions. Please see us instore for prices, as these are a case-by-case basis!

PHOTO MANIPULATION		
TYPE	APPROX. PRICE	DESCRIPTION
Crop	25	Crop to specific person and vignette (fade outside edges).
Remove	35	Items such as cigarettes, cups or glasses can be removed.
Remove	50	Remove background and replace with anything. Single person.
Remove	50	Remove background and replace with image or plain. Groups.
Add	75	Use image of person from other photo and align to image.

FILM

We process quite a bit of film still, it is quite popular with enthusiasts, pro’s and a number of people just not wanting to change to digital. If you just unearthed a few (or a box full) rolls of old film from a cupboard you’ve been meaning to clean for a decade or two you’re in luck! Imageland still offers film processing, right here, not somewhere else, we do it!

Colour film developing is not just a “turn on the machine and hope for the best” type of scenario. At 55 Lake Road we are darned picky and make sure we run Control Strips before running customers film, a part of a degree difference in temperature makes a lot of difference. Not only do we run these control strips, we also look at them to make sure we are getting good results from a baseline standard! We suspect you’d like us to be treating your film as if it were our own, so we do.



Processing rolls of 35mm film and disposable single use cameras is still a common service, many films are printed but if you’ve found some old rolls and have no idea what is on them we can scan them for you to check on your computer before committing to printing. We also process 120, 110, 126, 220, & APS film on-site.

Other film types

We get quite a bit of B&W film through, we do this on-site with a turn around of 1 to 2 weeks, depending on how many we have to develop. If you need it quicker than that - let us know. E-6 and Slide film can also be processed though we are not able to offer this service on-site currently.

FILM DEVELOPING

Definitions of each category & terminology

- Develop only: Good if you're not sure if the negatives have turned out
- B&W: Black and white film
- Develop & Scans: Wanting digital files (.jpg's) of the film*
- Half Frame: For half frame cameras that yeild double the frames per roll of film

DEV & SCANS	
FILM	PRICE
C-41	29
B&W	35
+ Prints (6x4in Matte/Gloss)	+10
+Half Frame Fee	+10

* Please see pages 6-18 for prices for additional prints/papers/sizes

DEVELOP ONLY	
FILM TYPE	PRICE
35mm	15
110	20
120	20
126	20
220	25
E-6	45
B&W	20
B&W - 120 / 220	25



VHS & REEL CONVERSION

If you've found some old videos while cleaning out a cupboard, let us know! We convert tapes or reels into watchable content again, whether it be to a USB, external harddrive or download link. Media not listed? Flick us an [email](#)



VHS CONVERSION	PRICE
VHS to File	45
VHS to DVD	50
Mini DV to File	55
High 8 to File	55

REEL CONVERSION	PRICE
1st Reel to File	95
+50ft 3in Reel	25
+200ft 5in Reel	45
+400ft 7in Reel	95



SCANNING

SCANNING AT IMAGELAND

- **PHOTO SCANS**
- **ART SCANS**
- **OBJECT SCANS**
- **NEGATIVE SCANNING**
- **COLOUR MATCHING**
- **+ MORE**

Having a suitcase of old photos, albums, negatives and slides arrive in our store is quite common. We can help you to find the best way of organising these for scanning.

Once scanned you can archive them as files or we can print them for you. The files we create can be sent to family if they are scattered far and wide and you can ask for a link to view or download your scans at any time.

Photo scanning is typically done with our Kodak, Canon or Epson scanners. Negatives and slides are scanned with our specialist film & slide scanners (primarily Fujifilm SP3000's and Noritsu S-3's). The big Epson 13000xl is used for the trickier photo scanning when damages are an issue, custom masks made on our CNC create the best results.

We can scan a single print, negative or slide too. Our default is to scan to print at twice the size of the original.

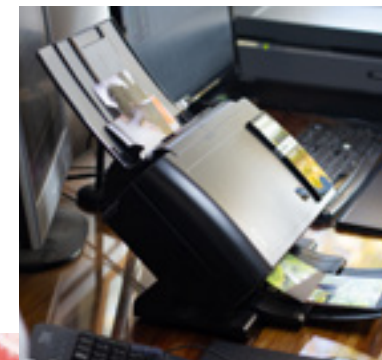
From 35mm negatives and slide we work with a standard 12x8 print size which is a bit over 3000x2000px and saved as a JPEG. When required for larger output, our gear can make files of greater size in a TIFF format.

PRINT SCANNING - BASIC

(UP TO A4 SIZE)

Good for: Quick and effective archiving and digitisation for sharing. Great for printing same as original size.

QUANTITY + EXTRAS	PRICE
Up to 10	10
Up to 25	25
Up to 50	50
Up to 150	100
Mounted / creased	+3 each
Colour adjustment	10 per x5 scans

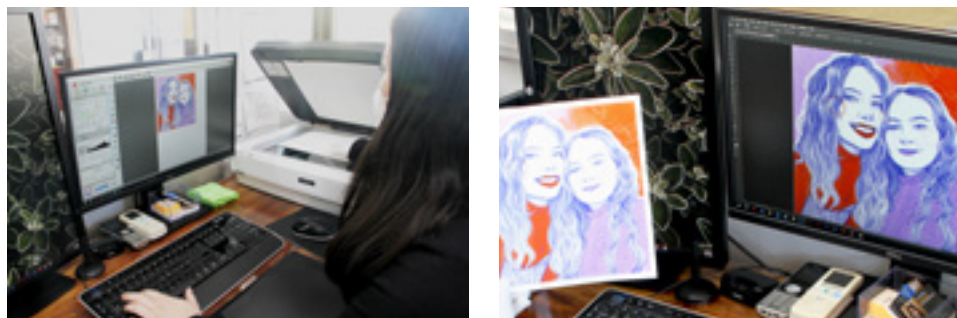


PRINT SCANNING - FLATBED

(ANY SIZE)

Good for: Reproduction and archiving - our ultimate goal is to work with the idea the someone other than yourself may want copies in years to come (i.e. after you're dead) so let's just do it well from the outset... :-|

Art Reproduction - Wish to create prints from your original artworks? Our flatbed scanning offers high resolution and accurate representation of your original art! Please note that we have additional costs for exact colour matching, please enquire via email for pricing on this.



A SERIES SCANS

- JPG Scans
- 300 DPI
- Good for basic reproduction

SIZE	1st	2-20	25-100	100-500	500+
300DPI JPG 4x4	10	2	2	1	1
300DPI JPG 6x4	10	4	4	3	2
300DPI JPG 7x5	10	4	4	3	2
300DPI JPG 12x8	10	8	7	6	5
300DPI JPG 14x11	10	8	7	6	5
300DPI JPG 20x16	30	22	21	18	15
300DPI JPG 30x20	55	45	42	37	31
300DPI JPG A3	10	8	7	6	5
300DPI JPG A2	30	22	21	18	15
300DPI JPG A1	110	90	84	73	62
300DPI JPG A0	215	180	169	146	124

B SERIES SCANS

- TIFF Scans
- 300 DPI
- Good for basic reproduction with the ability to enlarge

SIZE	1st	2-20	25-100	100-500	500+
300DPI TIFF 4x4	15	5	5	4	4
300DPI TIFF 6x4	15	11	10	9	8
300DPI TIFF 7x5	15	11	10	9	8
300DPI TIFF 12x8	15	13	12	11	9
300DPI TIFF 14x11	15	13	12	11	9
300DPI TIFF 20x16	50	41	40	37	34
300DPI TIFF 30x20	95	83	80	75	69
300DPI TIFF A3	15	13	12	11	9
300DPI TIFF A2	50	41	40	37	34
300DPI TIFF A1	185	166	160	149	138
300DPI TIFF A0	365	332	321	298	276

C SERIES SCANS

- TIFF Scans
- 600DPI
- Good for fantastic reproduction with the ability to enlarge

SIZE	1st	2-20	25-100	100-500	500+
600DPI TIFF 4x4	20	8	8	7	6
600DPI TIFF 6x4	20	16	15	14	12
600DPI TIFF 7x5	20	16	15	14	12
600DPI TIFF 12x8	20	16	15	14	12
600DPI TIFF 14x11	20	16	15	14	12
600DPI TIFF 20x16	60	54	53	50	47
600DPI TIFF 30x20	120	108	105	100	94
600DPI TIFF A3	20	16	15	14	12
600DPI TIFF A2	60	54	53	50	47
600DPI TIFF A1	235	217	211	200	189
600DPI TIFF A0	470	433	422	399	377

NEGATIVE & SLIDE SCANNING

Are your old family photos causing World War 3 in your family? Everyone wants to keep the same photo, but there's only one copy available? Instead of cutting it into equal portions so everyone has their fair share of the photo, have it scanned, saved in digital format & a copy printed for everyone! It's much easier and saves some of the family feuds occurring.



We're often asked if we do our scanning on-site. While taking the items with us to an island for scanning seems like a much nicer idea (who wouldn't like to have that outlook while doing a stack of scanning!?), we do stay in Hamilton while scanning your things (at 55 Lake Rd to be precise).



A SERIES SCANS

- JPG Scans
- 2400 px
- Our most "basic" negative scans
- Ideal for: Basic archiving, up to 12x8 prints

DESCRIPTION: "A" SERIES	1st (minimum)	2-25/ea thereafter	25-100/ea thereafter	100-500/ea thereafter	500+/ea thereafter
35mm film roll	20	15	12	11	10
35mm film frame	15	1.30	1.10	0.90	0.80
35mm slide frame	15	1.50	1.10	1	0.85
127 slide frame	15	2	1.80	1.60	1.50
APS film per frame	15	1	0.90	0.85	0.80
120 film roll	25	20	15	13	11
120 film frame	15	2	1.90	1.70	1.50
110 film frame	15	2.50	2.25	2	2
126 film frame	15	2.50	2.25	2	2
35mm strips	15	5	4	3	2.80
Other type of film	15	10	8	5	5

B SERIES SCANS

- JPG Scans
- 3600 px
- Bigger than our "basic scans"
- Ideal for: Large prints

DESCRIPTION	1st (minimum)	2-25/ ea thereafter	25-100/ea thereafter	100-500/ea thereafter	500+/ea thereafter
35mm film roll	25	22.50	18	16.50	15
35mm film frame	20	2	1.70	1.40	1.20
35mm slide frame	20	2.30	1.70	1.50	1.30
127 slide frame	20	3	2.70	2.40	2.30
APS film per frame	20	1.50	1.40	1.30	1.20
120 film roll	30	30	22.50	19.50	16.50
120 film frame	20	3	2.90	2.60	2.30
110 film frame	20	3.80	3.40	3	3
126 film frame	20	3.80	3.40	3	3
35mm strips	20	7.50	6	4.50	4.20
Other type of film	20	15	12	7.50	7.50

C SERIES SCANS

- TIFF Scans
- 3600 px
- Biggest scan
- Ideal for: Very large prints, Geeks

DESCRIPTION "C" Series	1st (minimum)	2-25/ ea thereafter	25-100/ea thereafter	100-500/ea thereafter	500+/ea thereafter
35mm film roll	30	30	27	24.80	22.50
35mm film frame	25	3	2.60	2.10	1.80
35mm slide frame	25	3.50	2.60	2.30	2
127 slide frame	25	4.50	4.10	3.60	3.50
APS film per frame	25	2.30	2.10	2	1.80
120 film roll	35	35	33.80	29.30	24.80
120 film frame	25	4.50	4.40	3.90	3.50
110 film frame	25	5.70	5.10	4.50	4.50
126 film frame	25	5.70	5.10	4.50	4.50
35mm strips	25	11.30	9	6.80	6.30
Other film type	25	22.50	18	11.30	11.30

FRAMING

- CUSTOM FRAMES
- READY-MADES
- LOTS OF DIFFERENT STYLES
- MADE IN STORE


Black, white, scoopy, rounded or flat...? Oh that's just a wee starter (not a starter you can eat though).

No matter what you have to frame (we see some weird stuff) we're going to find a solution that suits. Our range of voptions is large, we can also chop, alter or change the regular options. We often combine timber and aluminium or tone down finishes (especially bling bling gold) to make them more suitable.

We're a noisy bunch, if you've visited our shop you might have noticed a whirring, buzzing or banging going on, that's because our workshop has all the right machines and more for customising to the truest extent. You may also hear someone having a "chat" with a machine about its behaviour, sorry about that but

sometimes machines need a little discipline (can't possibly be the operator setting something wrong) and they need a little "direction".

The things you value are important to us, no matter the item we will treat it like our own. Our philosophy is pretty simple, we give a hoot and don't plan to go away, the last thing we want is people coming in ten years from now all sad and droopy looking because we did something silly. That said, we also don't plan to treat a 2 poster like a million dollar heirloom (unless you want us to, and you would not be the first).



**“BITS OF FRAMES...
IF YOU’VE HAD A FRAME
FALL OFF THE WALL,
BREAKING A PART, OR, ALL,
NO JOB IS TOO SMALL,
EVEN FOR STRING, GIVE US
A CALL!”**

BY KIM, JENNA & LANCE

FRAMING - BASICS RANGE

Our basics range frames consist of the frame, glass, matboard (that's the cardboardy bit) and a rigid MDF backing. If we're putting your photos in we'll typically attach cord and hangers, if not we'll include a wee Z clip so you can hang it in either direction or larger ones a cord and some hangers (not attached unless we know which way is up).



NAME FRAMES

This is a range that is popular for kids and offices, it can be complex working out the prices for all the different sizes so we made it as easy as we could by having a base rate and charging 5 per letter. That's about all we have to say really the rest is up to you! Pictures inside letters \$2 ea extra

FRAME STYLE	PRICE
Small Flat Range	20 base rate + 5/letter
Box Range	45 base rate+ 5/letter
Wide Flat Range	35 base rate + 5/letter
CT9R	95 base rate + 5/letter



Wide flat range. Comes in x5 different colours: White, Black, Raw, Honey and Walnut



Small flat range. Comes in x5 different colours: White, Black, Raw, Honey and Walnut



Boxed Black/White: Modern profile. This deep frame allows for a spacer which sets the framed item back from the glass, creating a shadow box frame effect.



Recycled Rimu: Each piece is unique and will vary in style - some being very rustic and other having a cleaner look. Every frame is different and can be made to suit your needs.

FRAMING - CUSTOM

There are many variations and types of frames available ranging from around 25 well into the thousands. It is tricky to give accurate pricing without seeing a piece, it's condition and understanding your expectations. That said, we get quite a lot of orders and made a guide to give you an idea of what to expect based on the last few thousand pieces we've had through. Please see the chart on the following page in the simplest format we can think of. With that, keep in mind we mentioned there are many variations for picture framing. We have different backing boards, different ways to stick things down and different ways of holding them in place if ""sticking it down"" is bad for it.

“INSERT
COOL
FRAMING
QUOTE
HERE”

Matboards (that cardboardy bit between the frame and image) comes in many colours, different grades and different thicknesses, to top that off we can use multiple boards, cut them in different ways and we can print on them too.

The glass options are fairly straight forward, in most scenarios there are only 3 or 4 relevant options but if you're wanting one that can't be broken with an axe then we'll have a different conversation and all prices above need some more zeros.

Our range of picture frames themselves is typically restricted to about 800, we can be found altering these too. To give an example - a high grade backing board on an A2 print can make a difference of several hundred dollars, while you may not see it, it does help your print last longer and that can be very important.



CUSTOM FRAMING QUICK GUIDE*

THING TO BE FRAMED	LOW RANGE	HIGH RANGE	COMMONLY FROM	COMMONLY UP TO
A4 print	45	500	135	235
A3 print	60	660	165	420
A2 print	100	945	220	500
A1 print	195	1,360	400	850
A0 print	425	1,600	600	1,100
A00 print	800	2,900	1,150	1,850
A1 Canvas in frame	250	1,200	360	675
A1 Canvas in frame	115	165	115	150
A0 Canvas in frame	425	1,600	650	950
A0 Canvas in frame	145	195	145	195
Sports shirt	450	1,500	450	750
Medals & photo	250	350	250	400
Object collection	500	5,000	750	1,650

*Note that these prices are simply a guide

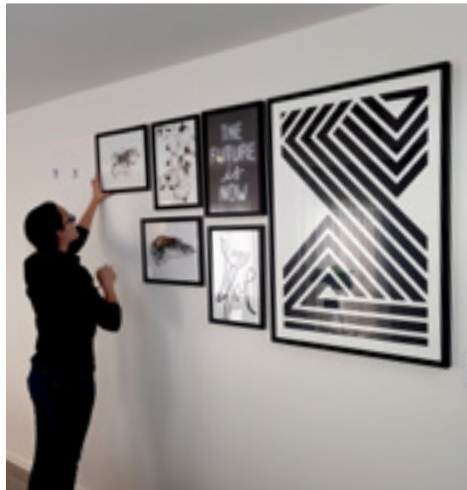


FRAMING: COMPONENTS

Do you need a new matboard because your dog chewed it? New glass because your frame fell off the wall or someone to come and re-hang said picture? Then we can help! We individually sell any framing components, have lots and lots of different hanging thingies and we even come and hang your frame in your house for you - how effortless!



INSTALLATIONS



Imageland offers an installation service for domestic and commercial locations. If you have a series or collection of items to hang in a specific layout or just something big and difficult let us know and we'll happily assess the options for you.

Install costs vary depending on where you live and how long it takes us to get the job done properly.

DESCRIPTION	PRICE
Installation Base Rate	115
Travel - Per km	1
Time - Per 1/4 hr	25

MATBOARD

Matboards (that cardboady bit between the frame and image) comes in many colours, different grades and different thicknesses. To top that off we can use multiple boards, cut them in different ways and we can print on them too.



SIZE	STANDARD WCB	A4977/A4858
4x4	10	10
6x4	10	10
5x5	10	10
6x6	10	10
7x5	10	10
8x6	10	10
8x8	10	10
10x8	10	15
10x10	10	15
12x8	10	15
12x12	15	20
15x8	10	15
20x8	10	20
14x11	15	20
18x12	15	30
16x16	15	30

SIZE	STANDARD WCB	A4977/A4858
20x16	15	30
20x20	25	50
24x16	25	50
24x20	25	50
24x24	45	95
27x18	25	50
30x10	15	30
30x20	25	50
30x30	45	95
36x12	25	50
36x24	45	95
A5	10	10
A4	10	15
A3	15	30
A2	25	50
A1	45	95

MDF

Suitable for low grade with a short lifespan. Tends to warp in damp environments

WHITE FOAM (WF5)

Acid free and light weight. Good for general Purpose, can tend to warp

ACM

Very rigid and strong. Suitable for large frames and frequently handled items.

KAPA MOUNT (KM5)

Acid free and light weight. Thin aluminium layers reduce warping. Most ideal backing.

GUDY 802

Permanent and durable mounting film. Suitable for high grade works. Must be added to suitable backing material (e.g. MDF, KM5, ACM)

SBoard

Previously known as D-Board, this is coated on both sides and is very stable for a thin board. It has excellent stiffness as well.

BACKING

SIZE	MDF	WF5	ACM	KM5	GUDY802	SBoard
4x4	10	10	10	10	10	10
6x4	10	10	10	10	10	10
5x5	10	10	10	10	10	10
6x6	10	10	10	10	10	10
7x5	10	10	10	10	10	10
8x6	10	10	10	10	10	10
8x8	10	10	10	10	10	10
10x8	10	10	10	15	10	10
10x10	10	10	15	15	10	15
12x8	10	10	10	15	10	15
12x12	10	10	15	20	15	20
15x8	10	10	15	15	10	15
20x8	10	10	15	20	15	15
14x11	10	10	15	20	15	20
18x12	10	10	20	30	20	25
16x16	10	10	20	25	20	30
20x16	15	10	25	35	20	30
20x20	15	10	35	45	25	30
24x16	15	15	30	40	25	45
24x20	20	15	40	60	30	45
24x24	30	20	75	110	55	80
27x18	20	15	40	60	35	45
30x10	15	10	25	35	20	25
30x20	20	15	40	60	35	45
30x30	30	20	75	110	65	80
36x12	20	15	35	50	30	45
36x24	30	20	75	110	55	80
45x30	30	30	75	110	65	155
48x36	45	30	110	160	75	155
40x10	15	10	30	40	25	30
60x20	45	20	110	160	65	80
60x40	80	30	215	310	125	155
A5	10	10	10	10	10	10
A4	10	10	10	15	10	15
A3	10	10	20	25	15	20
A2	15	15	30	40	25	45
A1	25	20	60	85	40	80
A0	45	30	110	160	70	155

GLASS

SIZE	PLG	AR70	UV99	AR99WW	ACRYLIC
4x4	10	10	10	15	15
6x4	10	10	10	15	15
5x5	10	10	10	15	15
6x6	10	10	10	20	15
7x5	10	10	10	20	15
8x6	10	15	10	20	15
8x8	10	15	10	25	15
10x8	10	15	15	30	20
10x10	10	20	15	35	20
12x8	10	20	15	40	20
12x12	15	25	20	65	30
15x8	10	20	15	40	20
20x8	10	25	20	55	25
14x11	10	25	20	65	25
18x12	15	35	25	85	40
16x16	15	55	35	120	35
20x16	15	55	35	120	45
20x20	20	55	35	120	65
24x16	20	80	45	180	60
24x20	30	80	45	180	85
24x24	50	150	85	350	165
27x18	30	80	45	180	85
30x10	20	45	25	95	45
30x20	30	80	45	180	85
30x30	50	150	85	350	165
36x12	20	65	45	180	75
36x24	50	150	85	350	165
45x30	50	290	160	695	165
48x36	50	290	160	695	245
40x10	20	55	35	120	60
60x20	50	150	85	350	245
60x40	95	290	160	695	480
A5	10	15	10	25	15
A4	10	20	15	40	20
A3	15	35	25	75	30
A2	20	80	45	180	55
A1	30	150	85	350	125
A0	50	290	160	695	245

PLAIN GLASS (PLG)

Standard glass that protects work from dust, dirt and fly marks.

ART GLASS WATER WHITE (AR70)

A nearly invisible glass that provides excellent clarity and glare reduction.

GROGLASS 99 (UV99)

Conservation glass that is 99% UV protective. This glass does not have glare reduction.

ART GLASS UV 99 (AR99WW)

Nearly invisible conservation glass that is 99% UV protective. This glass has excellent clarity and glare reduction.

ACRYLIC

A clear lightweight plastic that is impact resistant. Ideal for very large pieces.

HANGING STUFF

When it comes to hanging things there are plenty of options. You won't notice any of the "this won't damage your wall" type of things here though sorry, our experience is mostly about repairing damaged frames and replacing glass from failed attempts with such methods. Most modern paints and wallpapers are designed to repel dirt & grime, this includes repelling removable tapes.

If it needs to be flush to the wall, just a plain hook and some cord or if it needs to be secure from theft we can help. Here is a range of items suited for the most common situations including for the crazily heavy things like mirrors, framed printing plates, elephant poo or car parts.

ITEM	DESC/PRICE
	Vinyl-Coated Stainless Steel Wire #2, 7 kg 2.50/m
	Vinyl-Coated Stainless Steel Wire #4, 11 kg 3/m
	Vinyl-Coated Stainless Steel Wire #8, 45 kg 5/m
	2mm braided nylon cord 1/m
	Medium Hardwall hanger 2.50/ea
	Small picture hook & Nail 1/ea
	Medium picture hook & Nail 1.50/ea
	Double picture hook & Nails 2/ea
	Bearclaw 2-head hanger 1.50/ea
	No Bend hooks 1.50/ea
	Security Sets 15/ea
	49mm Nailless Sawtooth 1/ea
	24mm Nailless Sawtooth 1/ea
	48mm Screw type Sawtooth 1/ea

ITEM	DESC/PRICE
	Small Wallbuddies & hooks - 13kg 12.50/ea
	Large Wallbuddies & hooks - 36kg 15/ea
	6mm 3g Brass Pan head screw 0.50/ea
	9mm 4g Brass Pan head screw 0.50/ea
	12mm 6g Brass Pan screw 0.50/ea
	Canvas Hanger - 127mm - 9kg 15/ea
	Canvas Hanger - 305mm - 13kg 25/ea
	Tri Hanger - Small 0.50/ea
	Standard Brass Tri-Hanger 0.50/ea
	Heavy nickel 2 hole D-Ring 0.80/ea
	Heavy brass 2 hole D-Ring 0.80/ea
	2 hole strap hanger 0.80/ea
	3 hole strap hanger 2.50/ea
	Curl up 'n Stand clip brass 1/ea
	Curl up 'n Stand leg, small brass 2.50/ea

ITEM	DESC/PRICE
	Curl up 'n Stand leg, large brass 2.50/ea
	Kwik Hanger for foamboard 1/ea
	Craft black 2.5 b/out hanger 0.25/ea
	Swiss Clip for frameless displays 2/ea
	No 0 Screweye 0.50/ea
	No 1 Screweye 0.50/ea
	Heavy Hanger - 150mm - 34kg 17.50/ea
	Heavy Hanger - 250mm - 45kg 27.50/ea
	Heavy Hanger - 450mm - 90kg 35/ea
	25mm Glass Plate 2/ea
	32mm Glass Plate 2.50/ea
	12.7mm x3.5mm Clear bump 0.50/ea
	Safety Hanger - 3 hole 9.95/ea
	Safety Hanger - 5 hole 12.95/ea
	Furniture Anti-Tip Kit 29/ea

COMPETITION MOUNTS

Competition Mounts are a simple, but effective way to present photographs for competition or resale purposes.

The photo is applied to 5mm foamboard with quality adhesive, then matboard is mounted over top. 5 matboard colours available in our basics range - white, off white, black, green & blue - with the first 3 being most popular.

We produce 2 common sizes: 20" x 16" with a 12" x 8" image, or 14" x 11" with a 9" x 6" image.

Other sizes can be made up to 60" x 40".

SIZE	PRICE
14x11 - 6r Image	60
20x16 - 8r Image	75



CANVAS STRETCHING

Whether you have been on an awesome holiday and brought back canvases from overseas, or sitting at home buying them online we can stretch them for you! Prices vary based off size and sometimes stretching is not always the best option so bring it into us and we can get you a quote.



GET IN TOUCH

PHONE: 07 848 2060

ADDRESS: 55 Lake Road, Frankton, Hamilton

EMAIL: contact@imageland.co.nz

SOCIAL MEDIA

WEBSITE: <https://imageland.co.nz/>

FACEBOOK: <https://www.facebook.com/Imageland>

INSTAGRAM: https://www.instagram.com/imageland_hamilton/

OPENING HOURS

Monday - Friday	8:30 - 5:30
Saturday	10:00 - 3:00
Sunday	CLOSED
Public Holidays	CLOSED
By Appointment	To suit (fees may apply)
On-site	To suit (Fees may apply)

- Geeking out... A lot of terminology and jargon used in our industry is not legally defined (i.e. things like "acid free" basically mean nothing without more explanation). We try to avoid confusion so please feel free to ask if you're not sure about something.
- Errors are not planned nor all that common. It is however entirely plausible that we've made a mistake somewhere on the website or other published things like price lists. We will always fix any errors as quickly as possible, small errors in your favour may be honoured but larger ones will not.
- Prices are in NZD and include GST unless otherwise stated in quotations or sales proposals.
- Shipping/Freight is typically with NZ Post. We will sometimes elect to use a specific carrier or guard service for high value or very large items.
- Timeframes for custom made goods will typically be filled within 2-3 weeks. Products ordered from our website are usually available for shipping within a day or so, many items will be packed and ready to go within an hour of being ordered.
- Disputes, we prefer not to have disputes because we know it can make you and us feel stink. That said, sometimes we might not be able to meet your expectations within the scope of work originally contracted or we explained something with language that didn't make sense for you. Anyone on the team is likely to be able to help find a solution. If you need to work on a solution with Lance (owner) that's going to be fine too.
- Payment in advance for goods is normal but sometimes we're able to be flexible so please do ask if you're unsure. Bank transfer, paypal, common Credit and Debit cards are all accepted, as is NZ cash (in store). Orders normally get started once a deposit of at least 5000 or 50% of the order value has been made.

IMAGELAND

